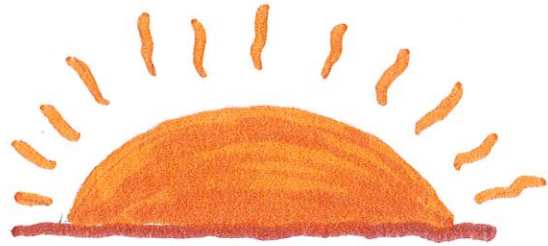
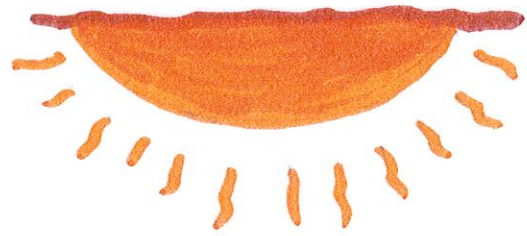


Waawyeyaa maanda ki

Waabnong



Epingishmok



Giiwedong

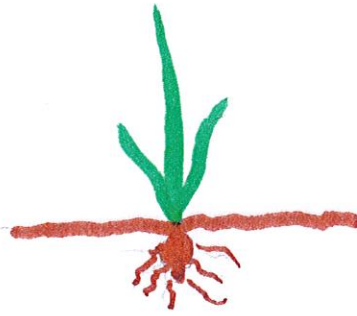


Zhaawnong



# Nitikokii-noonwin

Mnookmi



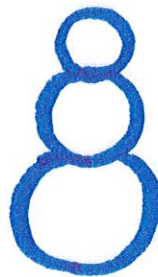
Niibin



Dgwaagi



Bboon



# Enji-baa Giiwtaaseying

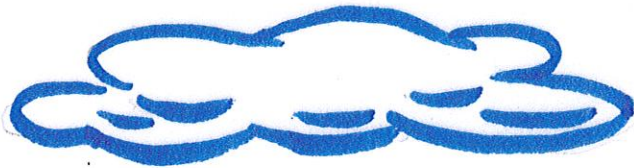
Nbiish



Aki



Shogiizhig

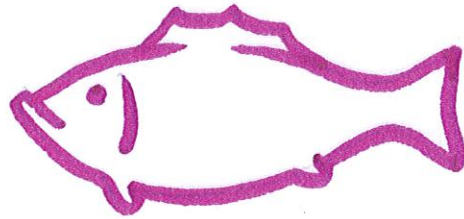


Mshkode

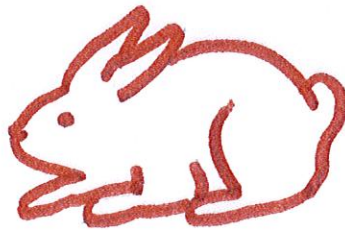


Wiiya gaa zhi'aa

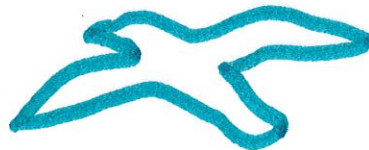
Giigoonh



Wesiinh



Bneshiinh



Bemaadzijig

